

Since 1995



FREE LOCK

by Stel Orthopedie



User manual

Free Lock PG
for prosthesis

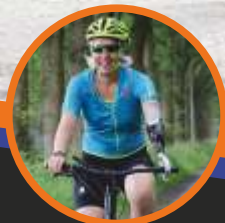
Free Lock OG
for orthosis

Name

Serial number

Final inspection

Juan Carlos Cano
Para triathlete Mexico



'Free Lock' is a gripping system to be fitted to a prosthesis or orthosis by which users with limited arm- or hand function can ride a bike or motorcycle.

The workings of the Free Lock-system

The Free Lock-system is a mechanism which is designed in such a way that it locks itself to the handlebar during accelerating and decelerating a (motor)cycle. In case of a collision, a crash or unexpected forces higher than pre-set, the system will unlock.

Attaching to the handlebar

The Free Lock-system was developed to give you a safe grip to a handlebar while still providing you with enough range of motion. Once attached to the handlebar, you can move freely and safely with a range of 20° in all directions. You need this range of motion to be able to ride a (motor)cycle. Outside this range of 20° the system will unlock and disconnect from the handlebar.

To guarantee the range of motion in all directions, the neutral position of the Free Lock relative to the handlebar has to have an angle of 90°. Please keep in mind that the angle of the handlebar itself may vary on different (motor)cycles. In some situations the handlebar or the orthopedic device itself needs to be adapted to obtain an optimal neutral setup of 90°. Furthermore, the Free Lock may only be used with the supplied handle.



Setting the adjustment screw

A Free Lock comes with a preset release power to unlock the system which is specifically tuned for your specific use. By the time you get more experienced in using the Free Lock, it is possible to adjust the basic setting according to your personal liking. Depending on the surface, speed and other personal preferences, you can vary the release power of the hook.



With the adjustment screw, which is located on the back side of the Free Lock, you can adjust the release power of the hook to tighten or loosen the grip on the handle. By turning the screw clockwise it will tighten the system and require more force to release the hook from the handle. When you turn it counterclockwise it will release easier.

! *Attention - Only set the adjustment screw a quarter at a time and see if the desired effect is reached.*

At all times make sure that the grip on the handlebar remains safe. A setup that is too loose might result in unintentional loss of grip on the handlebar. If the setup is too tight it might not release when needed.

To reset the Free Lock to the basic setup, you can use the supplied reference key. Put the reference key between the adjustment screw and the base of the Free Lock and turn the adjustment screw until it fits best between the screw and the base. Now remove the key and put both markers on the screw and the base exactly in line.

Check each time before use

Before each use, you need to check the Free Lock and your entire orthopedic device for any defects.

At least check the following points:

- the axle of the hook should not come out of its housing
- the hook has to move smoothly and should not be bent sideways
- the adjustment screw must be set to your basic setup (Check this before you make further adjustments)
- there should be no loose parts on the Free Lock-system
- there should be no sharp or damaged edges on the Free Lock-system

! *Attention - In case your device does not meet the aforementioned requirements, please have it checked by your orthopedic technician before further use.*

Everyday use

Make sure that the hook of the Free Lock is properly and securely locked around the handle before you start riding your bike or motorcycle.

Apply downward pressure to the Free Lock to lock it and you should feel a clear resistance when you try to lift the Free Lock from the handlebar.

Adaptation period and pain

A device which is being used for riding a bike or motorcycle will always transfer vibrations from the surface you ride on. It is possible that vibrations can amplify pain, depending on the condition you use the device for.

In general you will be able to ride without problems after a period of adaptation. When in doubt, you should contact your therapist for consultation.

Maintenance after every use

If your device gets wet or dirty during your activity, you can clean it with a damp cloth, a soft brush or rinse it with water and dry well afterwards.

You should lubricate the hinged parts with a teflon- or silicone spray on a regular base.

In case the device gets in contact with salt (i.e. sea water or perspiration) and or fine sand, you need to pay extra attention to rinsing and cleaning, because of corrosion and wear.

Scheduled maintenance

The Free Lock-system is a relatively low-maintenance mechanical gripping system. To guarantee proper functionality, the system needs to be serviced by a qualified technician at least once every year.

Overall functioning, safety and condition of several parts will be checked and parts will be replaced when needed.





Safe operation

The Free Lock can only be used safely when combined with the orthopedic device upon which it was constructed. It is not permitted to fit the Free Lock to any other device or have it used by another person than yourself. The orthopedic device, in combination with the Free Lock, is constructed for your specific needs and therefore it can lead to hazardous situations when used in other circumstances than intended, including use by other people than intended.



For that reason it is not permitted to use the Free Lock-system without personal instruction. In case your device is involved in a (potential) serious incident, please notify your orthopedic technician.

Warranty

Your Free Lock is part of a complete prosthesis or orthosis. This complete device has a set replacement term. A Free Lock-system, under normal circumstances and with proper use and maintenance, will meet this term.

When it is necessary to have your device checked or serviced, apart from the annual maintenance, please contact your own orthopedic technician.

We wish you many safe miles with your orthopedic device and the Free Lock-system!



*Scan this QR-code
for the instructional video*

Stel Orthopedie

Meerweg 2A+B | 9482 TE Tynaarlo | The Netherlands
Phone (+31)592-542555 | info@stelorthopedie.nl
www.stelorthopedie.nl | www.freelock.nl | www.mmvg.nl